

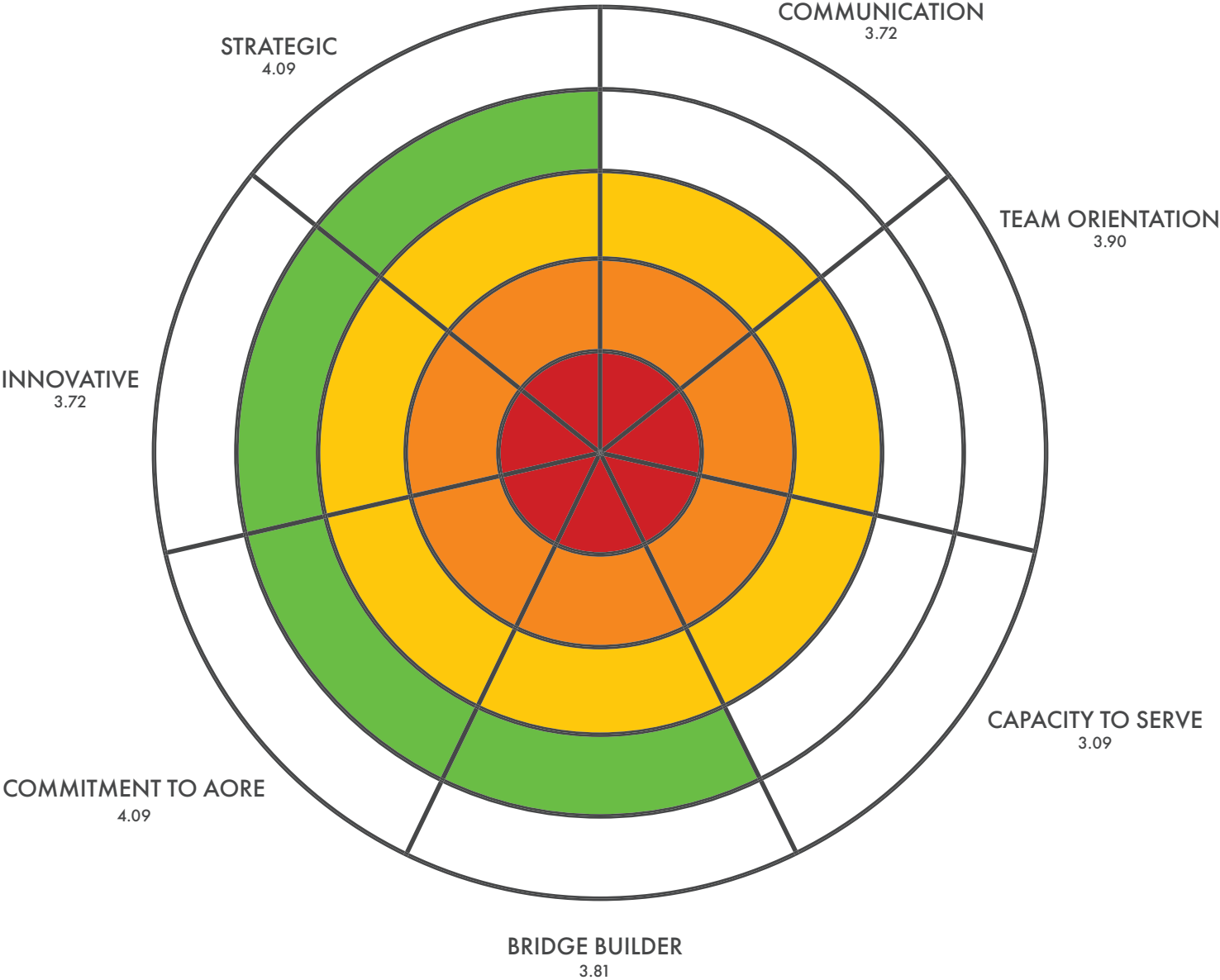
2021 AORE BOARD COMPETENCY MATRIX

CRITICAL

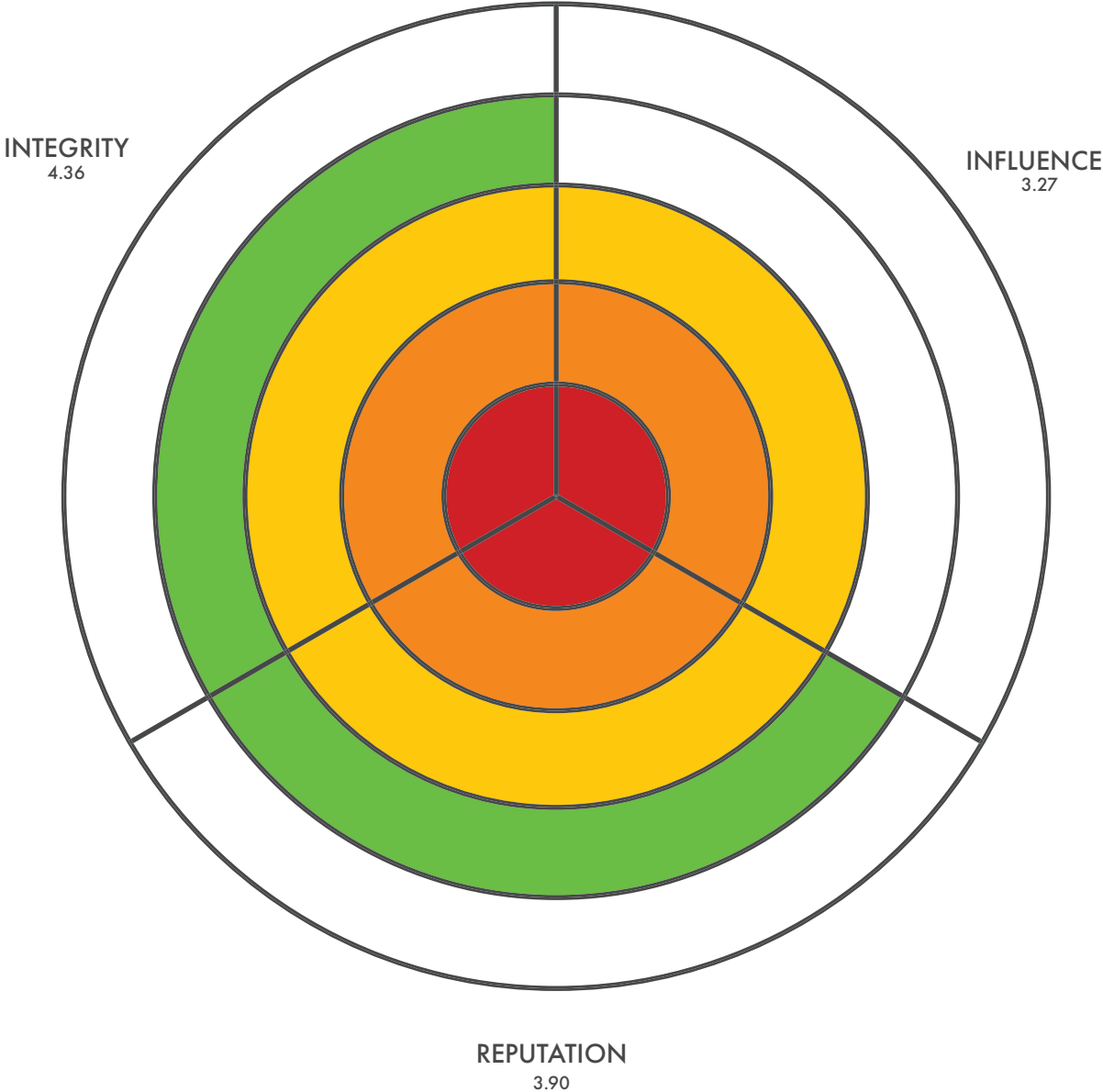
		BOARD MEMBER A	BOARD MEMBER B	BOARD MEMBER C	BOARD MEMBER D	BOARD MEMBER E	BOARD MEMBER F	BOARD MEMBER G	BOARD MEMBER H	BOARD MEMBER I	BOARD MEMBER J	BOARD MEMBER K
PERSONAL ATTRIBUTES	COMMUNICATION											
	TEAM ORIENTATION											
	CAPACITY TO SERVE											
	BRIDGE BUILDER											
	COMMITMENT TO AORE											
	INNOVATIVE											
	STRATEGIC											
INTERPERSONAL ATTRIBUTES	INTEGRITY											
	INFLUENCE											
	REPUTATION											
TECHNICAL SKILLS AND EXPERIENCE	NON-PROFIT GOVERNANCE											
	STRATEGIC PLANNING											
	PROJECT MANAGEMENT											
	ORGANIZATIONAL RISK MANAGEMENT											
	FINANCE/ACCOUNTING											
	LEGAL AFFAIRS											
	HUMAN RESOURCE DEVELOPMENT/ MANAGEMENT											
	STRATEGIC COMMUNICATION											
	FUNDRAISING AND DEVELOPMENT											
	ADVOCACY											
	DIVERSITY, EQUITY, AND INCLUSION											

1 2 3 4 5
1 = NO EXPERIENCE 5 = EXPERIENCE

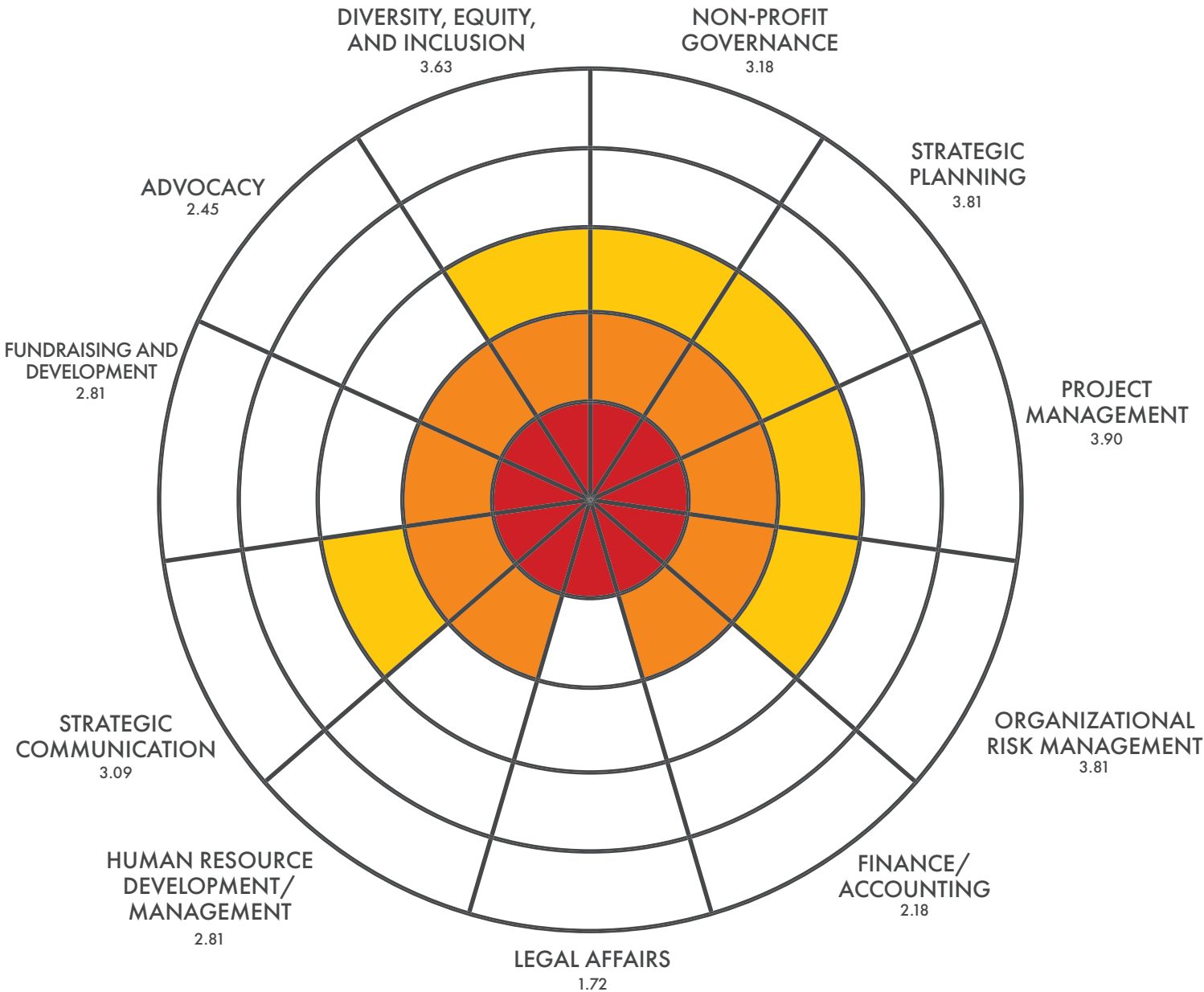
PERSONAL ATTRIBUTES



INTERPERSONAL ATTRIBUTES

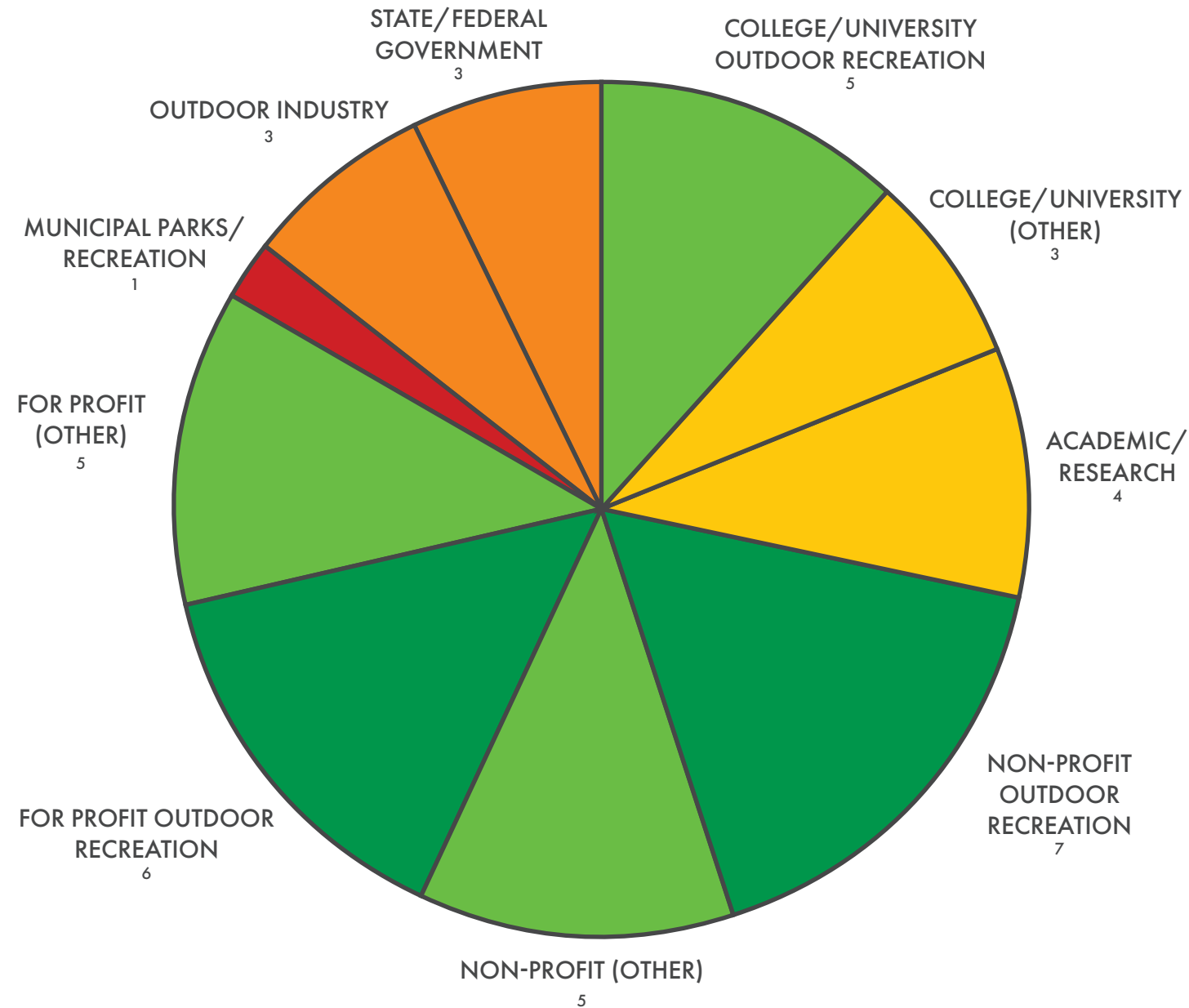


TECHNICAL SKILLS AND EXPERIENCE



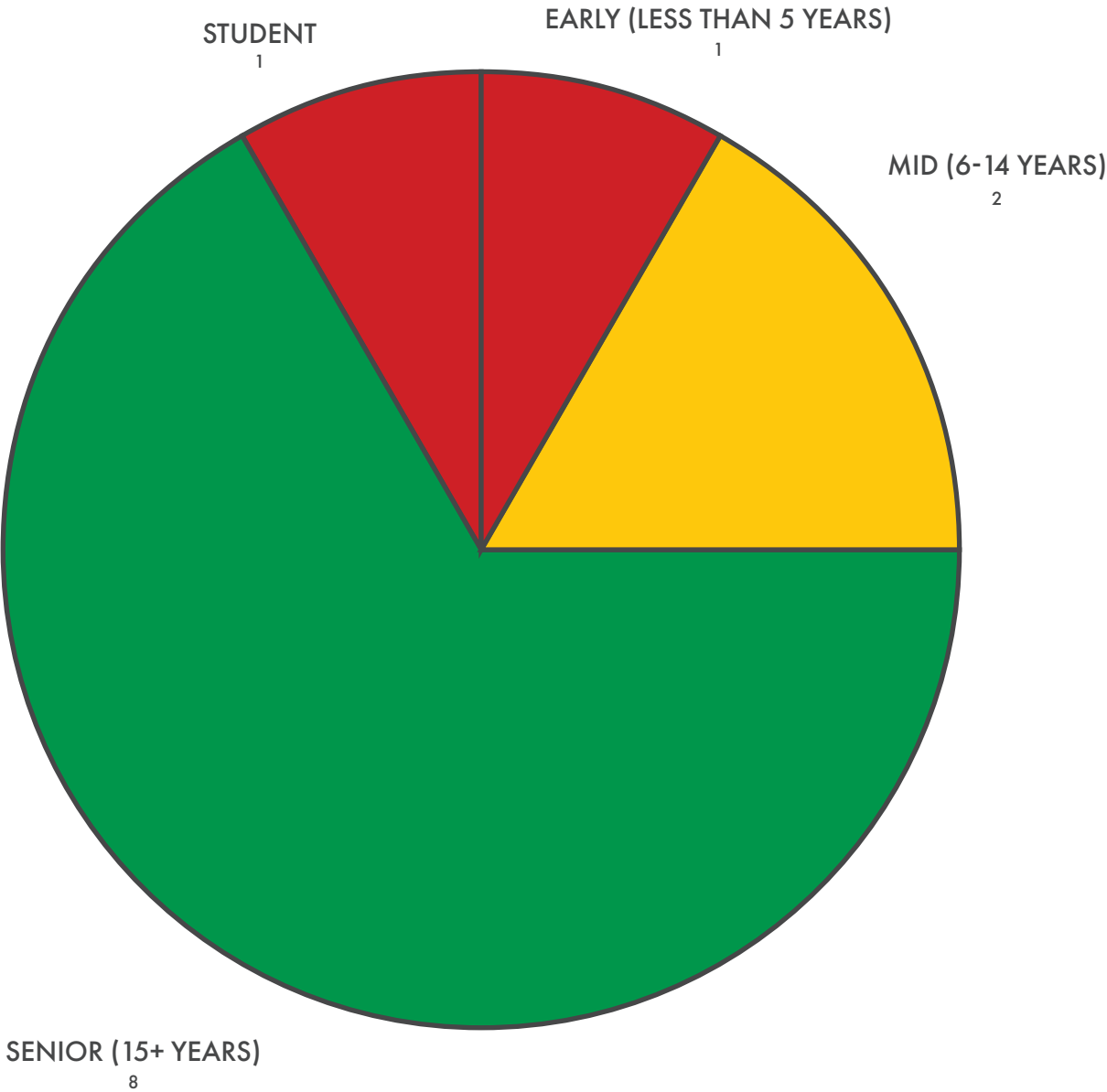
INDUSTRY EXPERIENCE

Board members checked all that applied

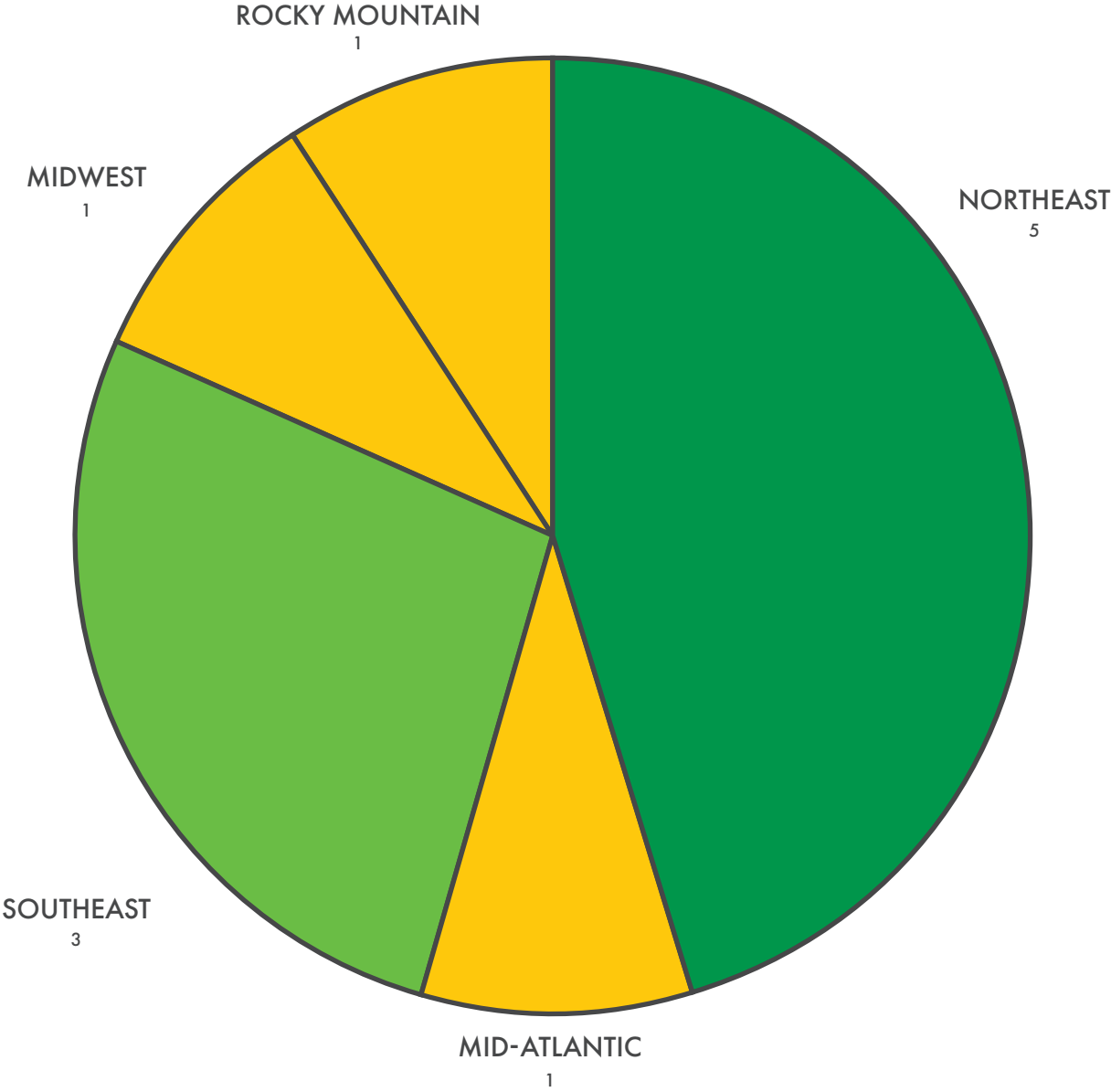


0 Industry Experience:
• Military MWR
• Other (Fill in blank)

CAREER LEVEL

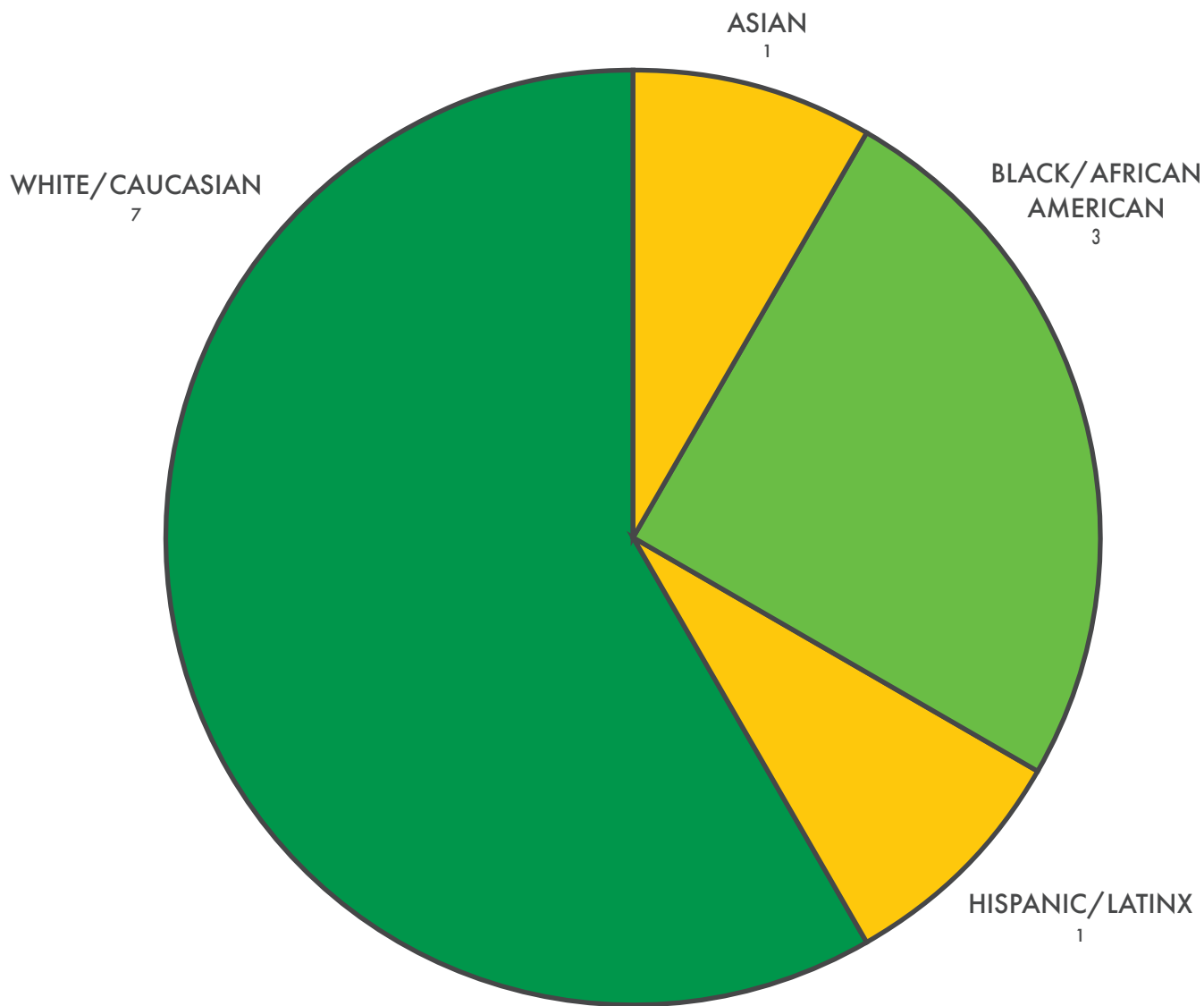


REGION



- Regions Not Represented
- Southwest
 - West Coast
 - Pacific Northwest

RACE / ETHNICITY (SELF DESCRIBED)



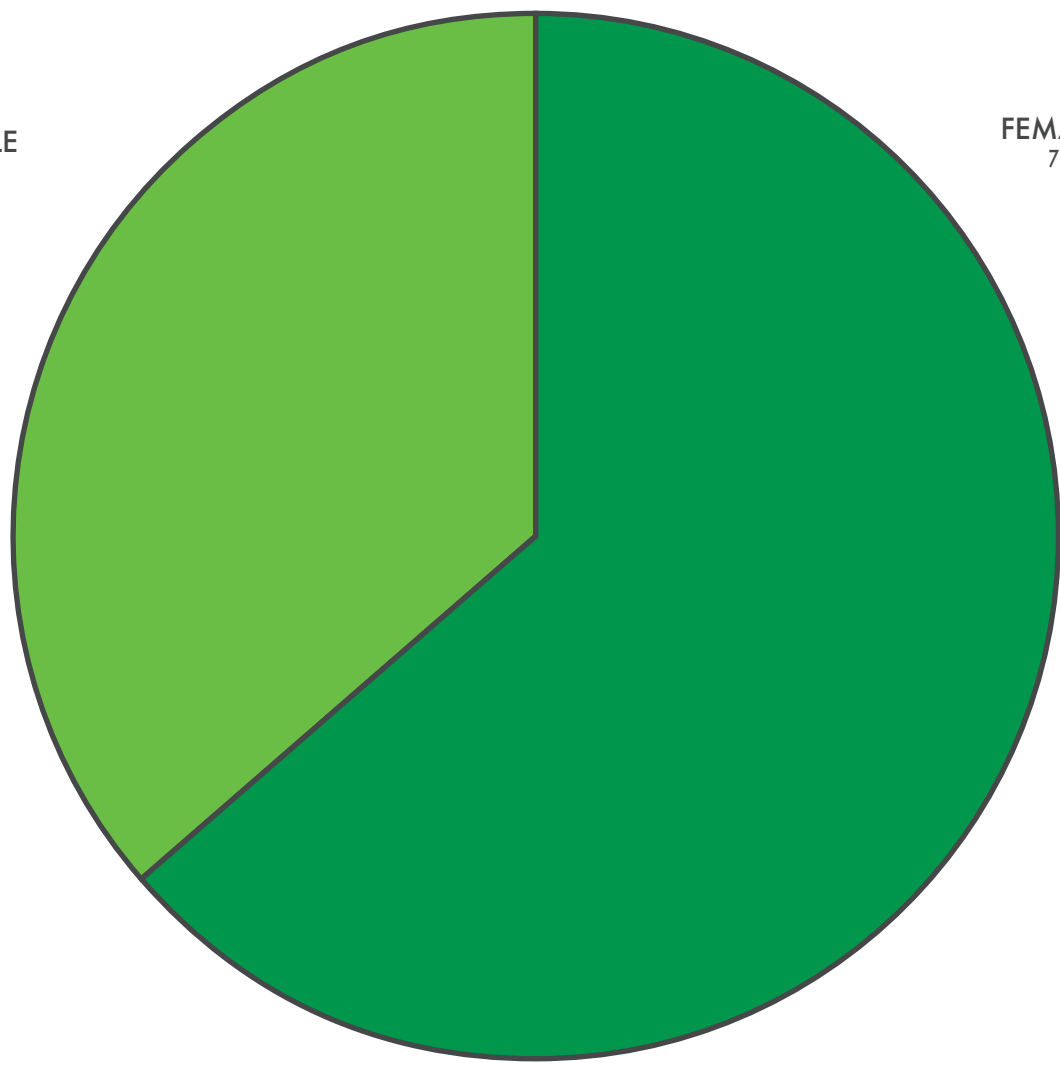
Races/Ethnicities Not Represented

- Middle Eastern or North African
- Native American
- Pacific Islander

GENDER (SELF DESCRIBED)

MALE
4

FEMALE
7



Genders Not Represented
• Non Binary